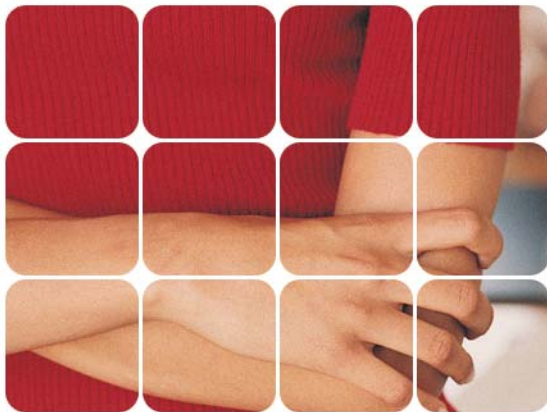


smartcards  
mobility  
**industry**  
telecommunications



# Sm@rtVox

## Digital speaker

There is often the need to advise users about actions to be executed but this, specially when the people is not trained, this is not an easily obtainable target. The right solution is in those cases a vocal announcement system that guides the user through all the needed steps.

This need can be easily satisfied using **Sm@rtVox**, a simple electronic board that integrates vocal emission capabilities.

It has been engineered to integrate with existing audio interphone equipment, with the capability of speaker sharing and stopping or restarting the audio play on demand; this feature greatly reduces the interference between automatic operation and manual operator assistance. It is possible to store more than 90 messages with a total length of 5 minutes.

**Sm@rtVox** is microprocessor based and can easily be reconfigured, even in field, both with custom specified adaptations and in the usual operating mode, simply using our programming tool delivered together with the board.



**S.P.E.® Sistemi e Progetti Elettronici**  
s.a.s. di P.Prandini & C.

Via Liguria 5  
I 25125 BRESCIA  
ITALIA  
Tel. +39 0302427266  
Fax +39 02700406565  
Email [info@spe.net](mailto:info@spe.net)  
WWW <http://www.spe.net>

Il logo SPE è un marchio registrato di S.P.E.

# Sm@rtVox

## Automatic vocal messages



Electronic board driven with RS-232-C/V. 24 serial port or contact logic

## Products for industry

- Storage for 90 messages with a total length of 5 minutes, with 1/5 of second steps
- Programming software delivered together with the board. developed for the Microsoft® Windows environment with multilanguage graphical user interface
- 24 Volt power supply
- Removable interface connector makes first time installation very quick
- Device status is shown by clearly understandable LEDs
- Interface signals are electrically isolated
- Two potential free relays switch a single speaker between the existing interphone system ( if present ) and the board output

General technical features	
Supply voltage	24 Volt C.C.
Supply power	12 W (max)
Working temperature	from 0 to +60°C
Storage temperature	from -40° to +85°C
Size	140 mm (width) , 30 mm (high), 87 mm (depth)
Interfaces	Serial RS-232-C/V. 24

Technical features of inputs	
Number of inputs	2
Type	Optocoupled
Operative voltage	24 V C.C. and C.A.

Connections	
RS-232-C/V.24 external systems	Using an RJ11 terminated cable this serial port can connect to the external system that requests voice events
RS-232-C/V.24 PC	Using a flat cable this serial port can be connected to a standard PC DB-9 port during the programming phase
Audio PC	Using a short coaxial audio cable terminated with a stereo jack this port connects to the PC audio output; used only during the programming phase
Speaker	Audio power connection with a 4 to 32 Ohm impedance speaker
Interphone	Audio power connection to the audio output of the interphone system, typically connected to the speaker when SmartVoice is not playing voice messages
IN 1	Digital input, activates audio message playing or stops current message
IN 2	Digital input, activates audio message playing or stops current message



Sm@rtVox has been engineered to integrate with existing audio interphone equipment,